

Pond Edge
Model Types
Plot Plan
Floor Plans

Index

Model Types

North Village	Page 3
East Village	Page 4
South Village	Page 5
West Village	Page 6
Summary	Page 7

Plot Plans

North & East Villages	Page 8
South & West Villages	Page 9

Floor Plans

Andean	Page 10
Barrow	Page 11
Campbell	Page 12
Drake	Page 13
Eider	Page 14

North Village Model Types

Unit #	Model Type	
101	Andean	End Unit
102	Barrow	
103	Campbell	
104	Campbell	
105	Barrow	
106	Barrow	
107	Andean	End Unit
108	Andean	End Unit
109	Barrow	
110	Campbell	
111	Campbell	
112	Barrow	
113	Andean	End Unit
114	Andean	End Unit
115	Barrow	
116	Campbell	
117	Campbell	
118	Barrow	
119	Andean	End Unit
120	Andean	End Unit

Unit #	Model Type	
121	Barrow	
122	Campbell	
123	Campbell	
124	Andean	End Unit
125	Campbell	End Unit
126	Campbell	
127	Barrow	
128	Barrow	
129	Campbell	
130	Barrow	
131	Campbell	End Unit
132	Andean	End Unit
133	Campbell	
134	Campbell	
135	Campbell	
136	Andean	End Unit
137	Andean	End Unit
138	Campbell	
139	Campbell	
140	Barrow	
141	Andean	End Unit

North Village Model Type Summary

Model Type	Number of Homes
Andean	12
Barrow	12
Campbell	17
Total	41
End Units	14

East Village Model Types

Unit #	Model Type	
201	Andean	End Unit
202	Barrow	
203	Barrow	
204	Andean	End Unit
205	Campbell	End Unit
206	Barrow	
207	Barrow	
208	Campbell	
209	Campbell	End Unit
210	Andean	End Unit
211	Barrow	
212	Barrow	
213	Campbell	
214	Campbell	
215	Barrow	
216	Andean	End Unit
217	Andean	End Unit
218	Barrow	
219	Campbell	
220	Campbell	
221	Barrow	
222	Andean	End Unit

East Village Model Type Summary

Model Type	Number of Homes
Andean	6
Barrow	9
Campbell	7
Total	22
End Units	8

South Village Model Types

Unit #	Model Type	
301	Drake	End Unit
302	Eider	
303	Eider	
304	Eider	
305	Eider	
306	Eider	
307	Drake	End Unit
308	Drake	End Unit
309	Eider	
310	Eider	
311	Eider	
312	Eider	
313	Eider	
314	Drake	End Unit
315	Andean	End Unit
316	Barrow	
317	Campbell	
318	Campbell	
319	Barrow	
320	Andean	End Unit

Unit #	Model Type	
321	Andean	End Unit
322	Barrow	
323	Barrow	
324	Barrow	
325	Barrow	
326	Andean	End Unit
327	Andean	End Unit
328	Barrow	
329	Campbell	
330	Campbell	
331	Barrow	
332	Andean	End Unit

South Village Model Type Summary

Model Type	Number of Homes
Andean	6
Barrow	8
Campbell	4
Drake	4
Eider	10
Total	32
End Units	10

West Village Model Types

Unit #	Model Type	
401	Andean	End Unit
402	Barrow	
403	Campbell	
404	Campbell	
405	Barrow	
406	Andean	End Unit
407	Andean	End Unit
408	Barrow	
409	Campbell	
410	Campbell	
411	Barrow	
412	Andean	End Unit
413	Drake	End Unit
414	Eider	
415	Eider	
416	Eider	
417	Eider	
418	Eider	
419	Drake	End Unit
420	Andean	End Unit
421	Barrow	
422	Campbell	
423	Campbell	
424	Barrow	
425	Andean	End Unit

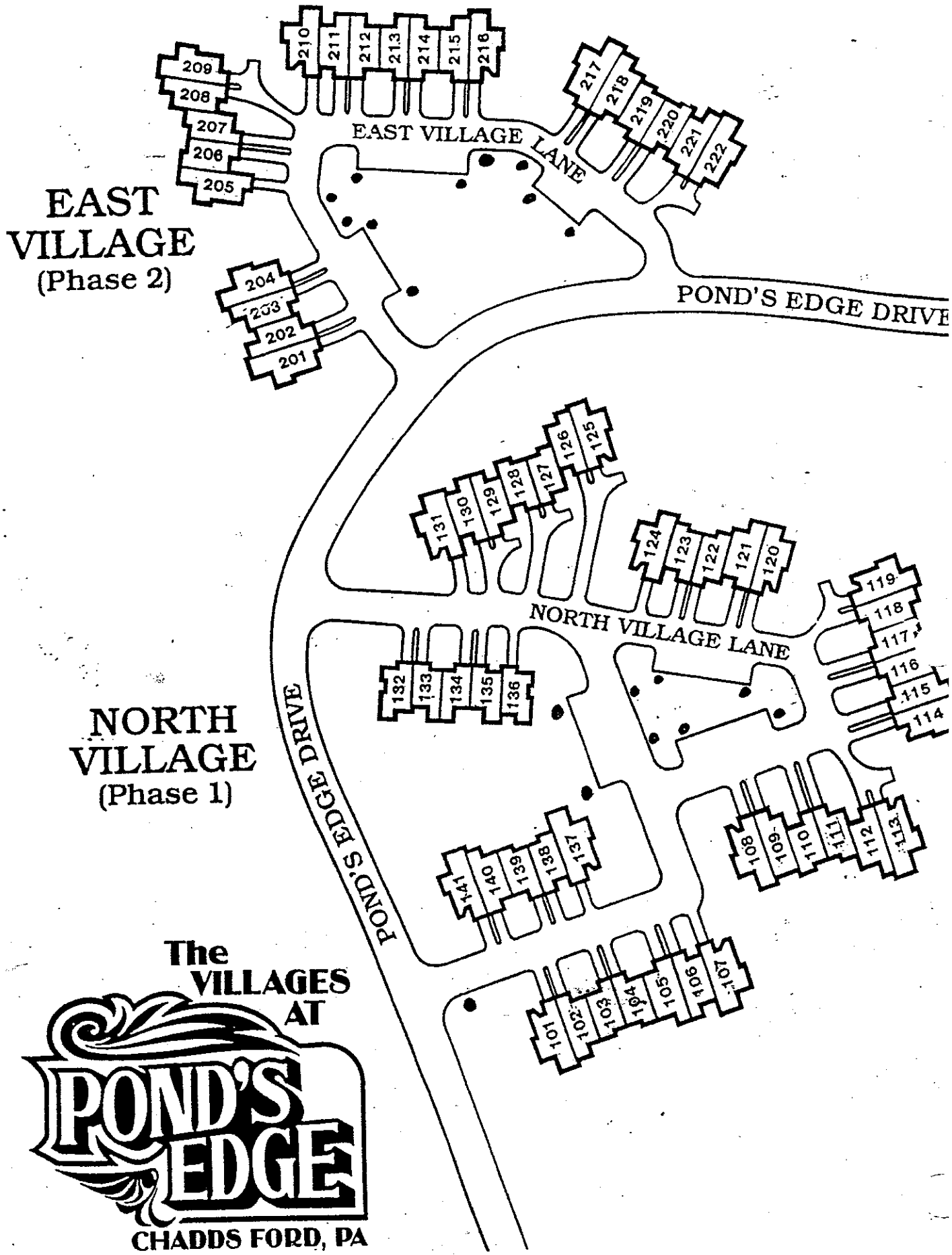
West Village Model Type Summary

Model Type	Number of Homes
Andean	6
Barrow	6
Campbell	6
Drake	2
Eider	5
Total	25
End Units	8

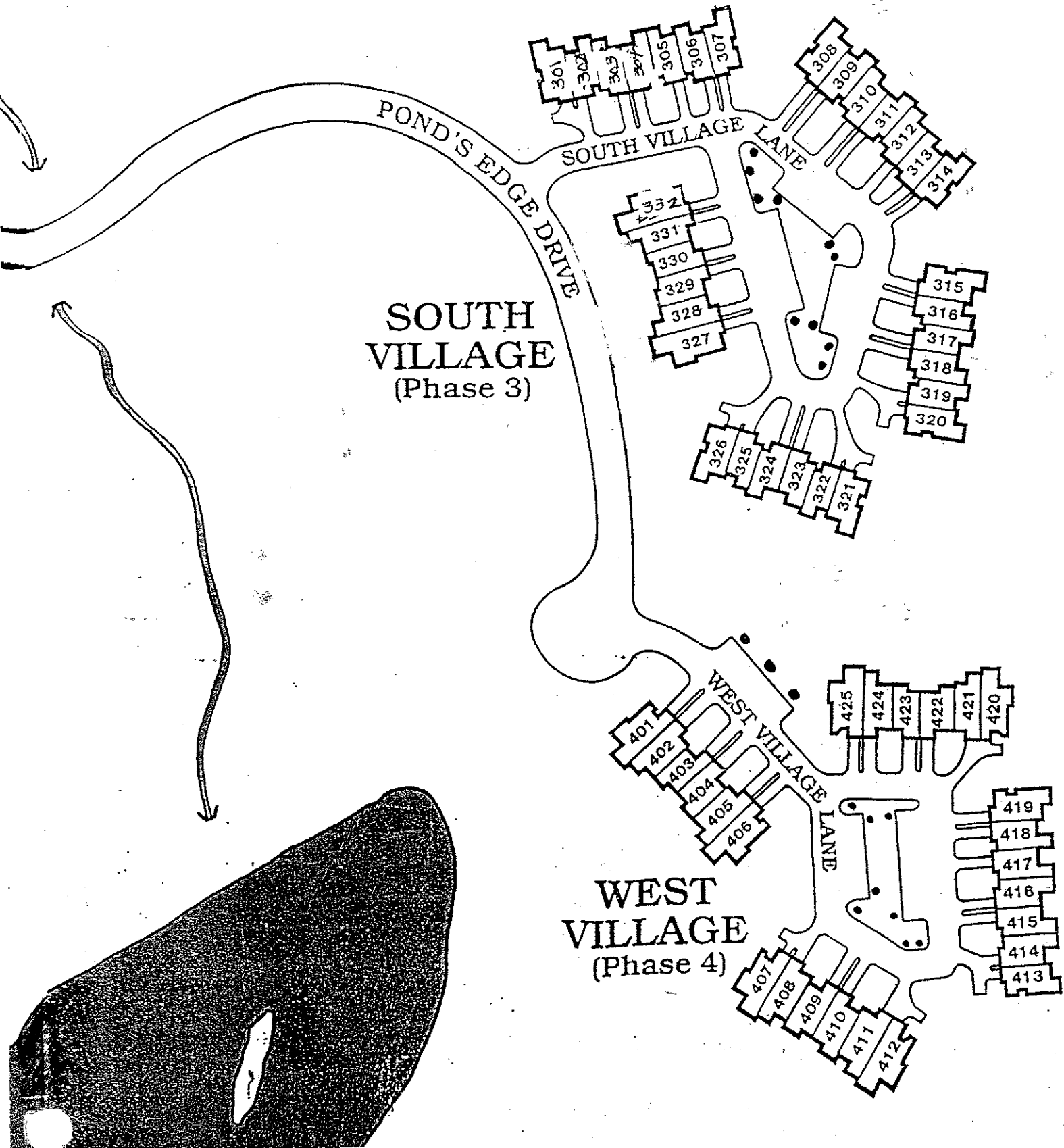
Ponds Edge Model Type Summary

	North Village	East Village	South Village	West Village	Total
Andean	12	6	6	6	30
Barrow	12	9	8	6	35
Campbell	17	7	4	6	34
Drake			4	2	6
Eider			10	5	15
Total	41	22	32	25	120
End Units	14	8	10	8	40
Rows	7	4	5	4	20

North & East Village Plot Plans

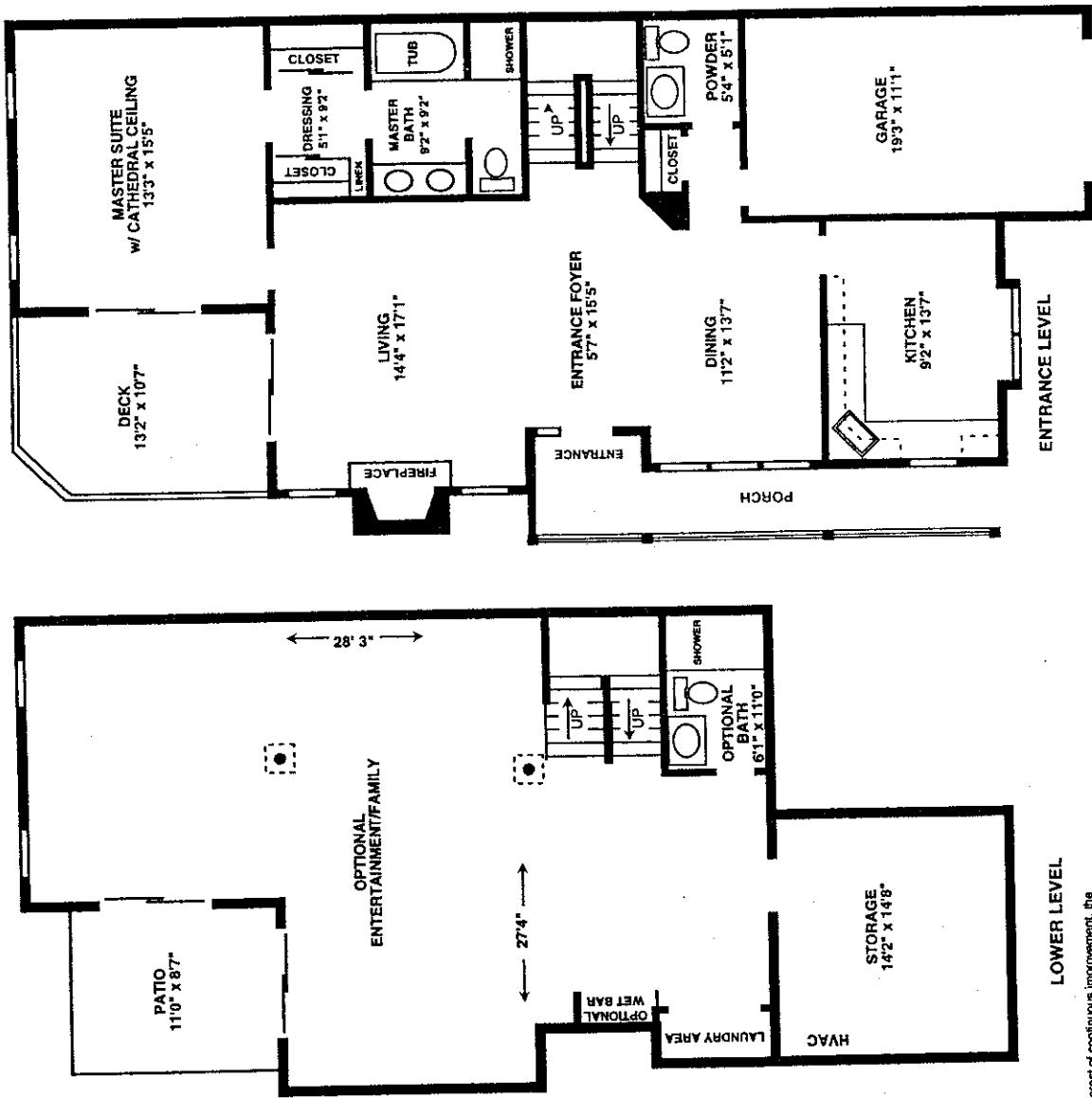


South & West Village Plot Plans





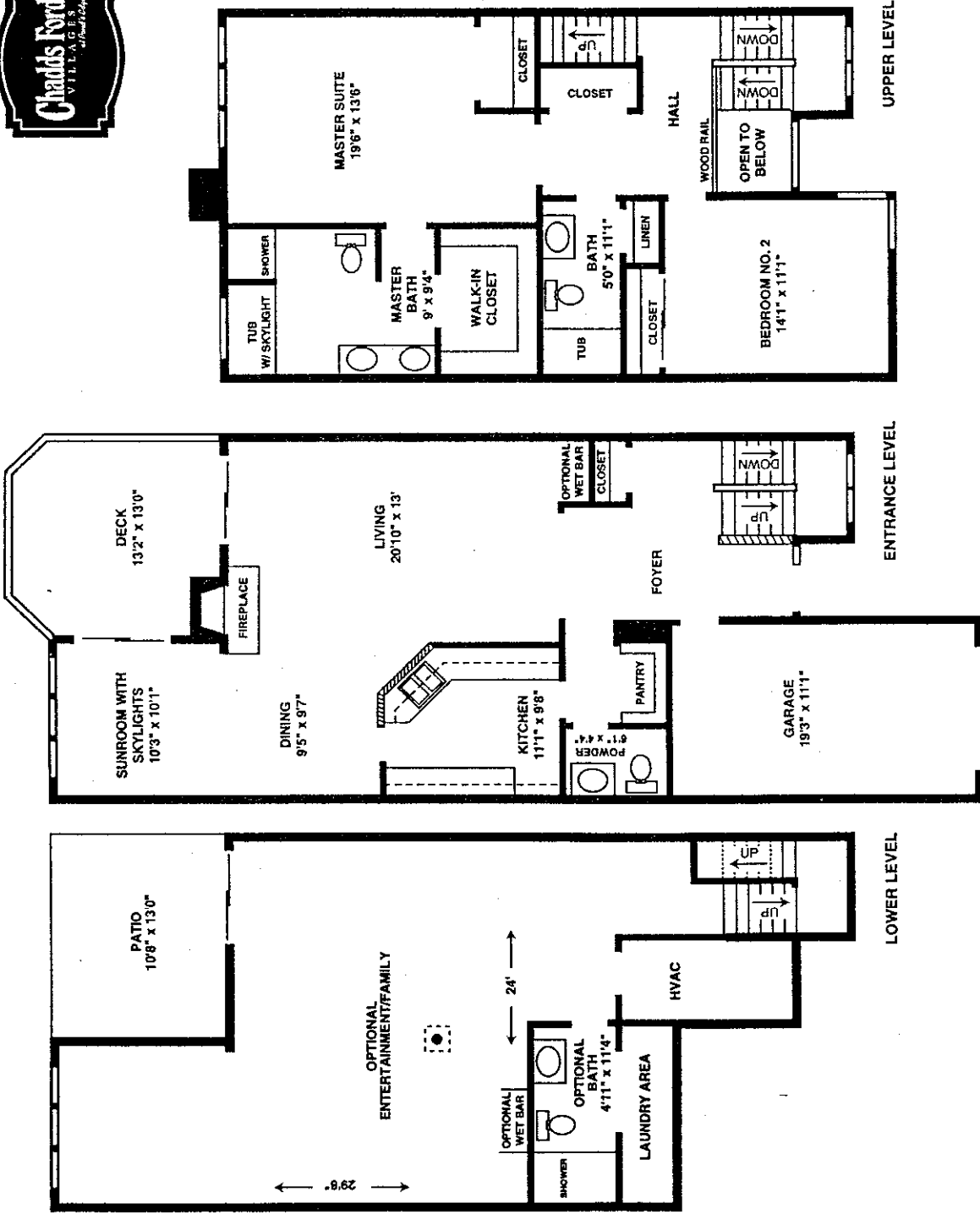
The Andean



In the interest of continuous improvement, the builder reserves the right to make modifications in floor plans, interior design, prices, materials and specifications at any time without prior notice. All dimensions are approximate.

The Andean features a covered porch entrance and a well proportioned floor plan that includes the master suite on the main living floor. The cathedral ceiling, private dressing area and bath with both shower and tub truly make this a master suite fit for royalty! The living room has a wood burning fireplace and a cathedral ceiling. Relax on your own deck with sliding door entrances from both the master suite and the living room. On the upper level is a second bedroom and full bath with a loft that overlooks the living room and fireplace. On the lower level, you have the option of a large finished entertainment/family room with full bath, and lots of additional storage.

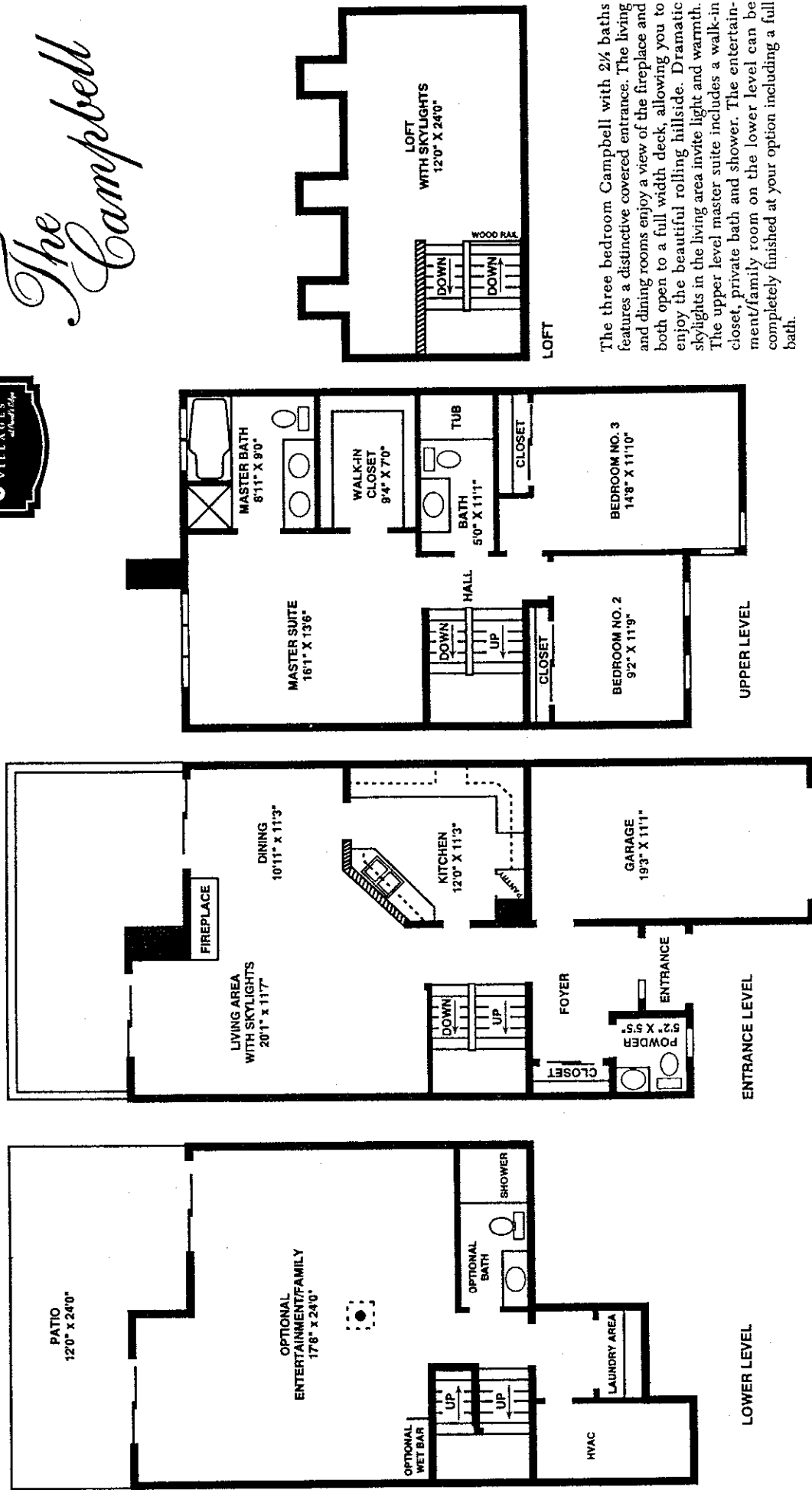
The Barrow



Light is what you first notice in the Barrow. From the palladian window spanning the staircase to the relaxing sunroom with skylights. You'll enjoy the light, open living of this two bedroom, 2½ bath Cluster Home. The expansive living and dining areas feature a fireplace that can be enjoyed by all. The kitchen is opened on one side for relaxed entertaining. A separate pantry provides plenty of organized storage space. In the master suite, the private bath includes both a shower and a tub. The walk-in closet is a special luxury. A finished entertainment/family room with bath and enclosed storage on the lower level is optional.

In the interest of continuous improvement, the builder reserves the right to make modifications in floor plans, exterior design, prices, materials and specifications at any time without prior notice. All dimensions are approximate.

The Campbell

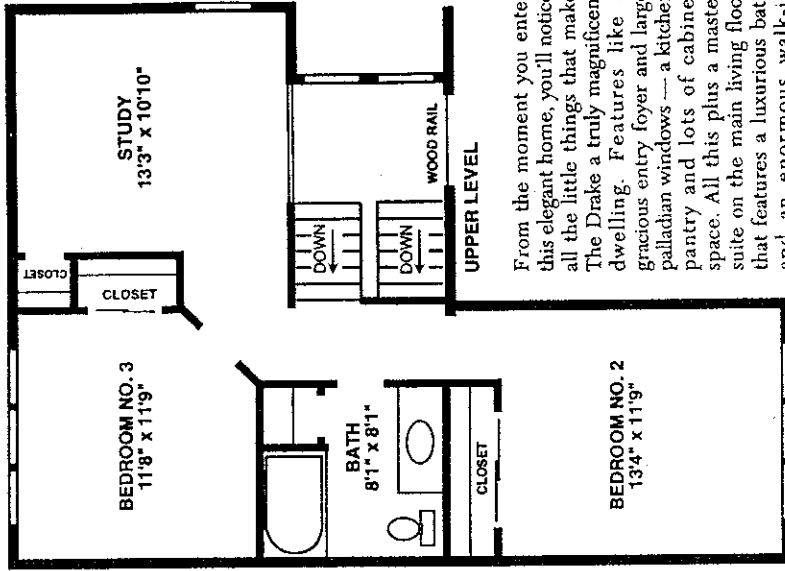
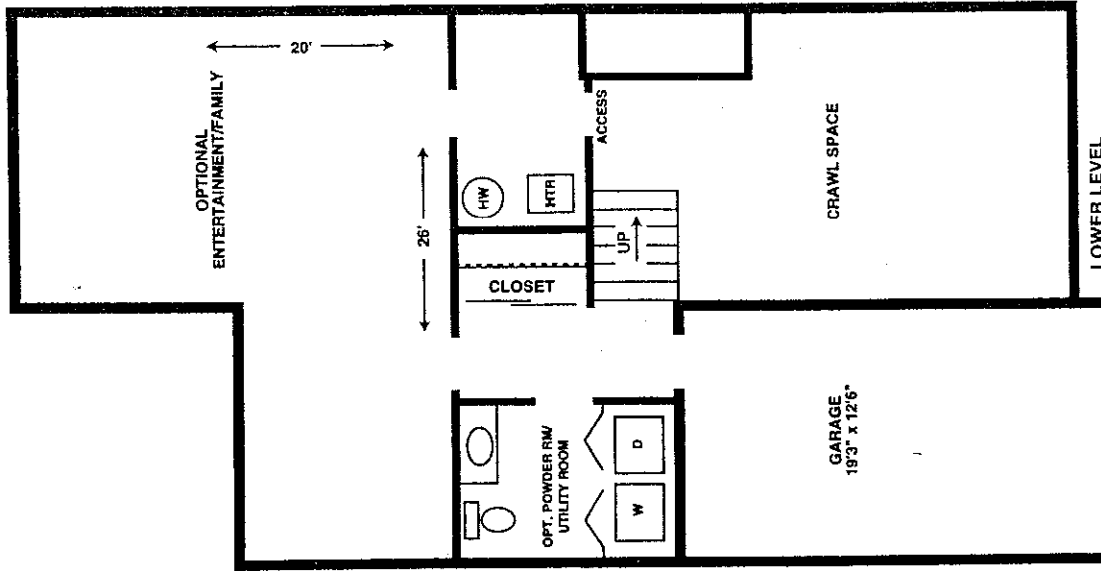
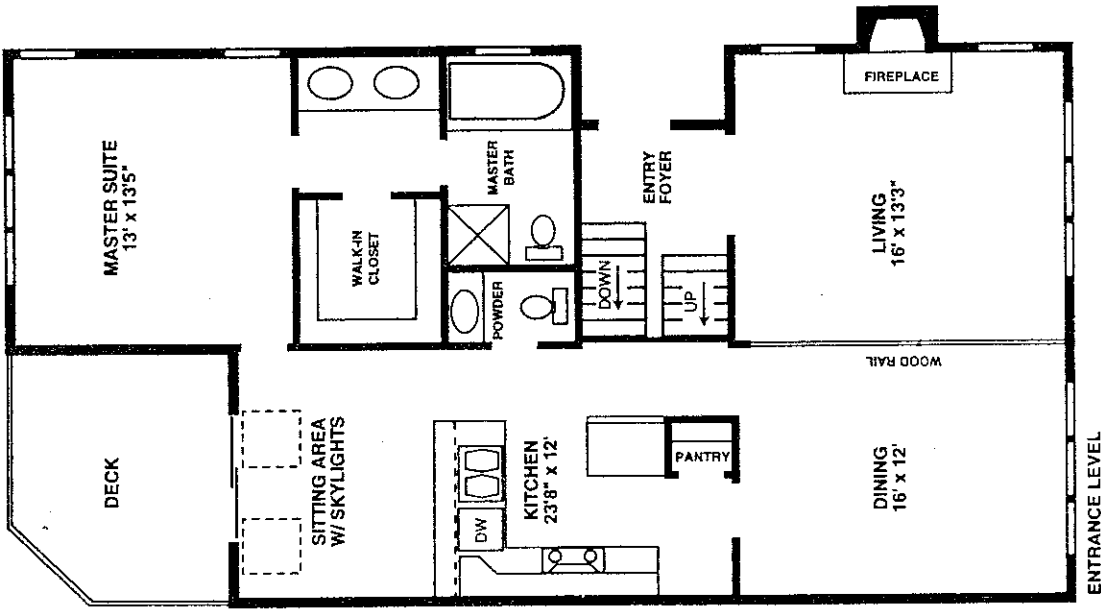


The three bedroom Campbell with 2½ baths features a distinctive covered entrance. The living and dining rooms enjoy a view of the fireplace and both open to a full width deck, allowing you to enjoy the beautiful rolling hillsides. Dramatic skylights in the living area invite light and warmth. The upper level master suite includes a walk-in closet, private bath and shower. The entertainment/family room on the lower level can be completely finished at your option including a full bath.

In the interest of continuous improvement, the builder reserves the right to make modifications in floor plans, exterior design, prices, materials and specifications at any time without prior notice. All dimensions are approximate.



The Drake



From the moment you enter this elegant home, you'll notice all the little things that make The Drake a truly magnificent dwelling. Features like a gracious entry foyer and large palladian windows --- a kitchen pantry and lots of cabinet space. All this plus a master suite on the main living floor that features a luxurious bath and an enormous walk-in closet. On the upper level are

two large bedrooms and a study or separate work/hobby area. The lower level provides you with the option of a large finished entertainment/family room plus ample room for storage and work areas. The Drake is a home that will make all your dreams come true.

In the interest of continuous improvement, the builder reserves the right to make modifications in floor plans, exterior design, prices, materials and specifications at any time without prior notice. All dimensions are approximate.

The Eider



The two bedroom Eider, with 2 1/2 baths, features an elegant step-up entry with arched window. Enter into the large formal living room with fireplace and picture yourself entertaining guests... or, if casual dining is in order, gather in the skylit breakfast room overlooking the outdoor deck. On the upper level, the master suite features lots of closet space and a master bath with both tub and shower. The finished loft is ideal for study, hobbies or a private at-home office. The entertainment/family room on the lower level can be completely finished at your option.

In the interest of continuous improvement, the builder reserves the right to make modifications in floor plans, exterior design, prices, materials and specifications at any time without prior notice. All dimensions are approximate.